

SYMPHONY OPUS®

USER FRIENDLY OPERATOR INTERFACE FOR
COMPLETE PROCESS AUTOMATION AND
DATA ANALYSIS



 TECPORT

Symphony Opus process control software delivers the best of both worlds.

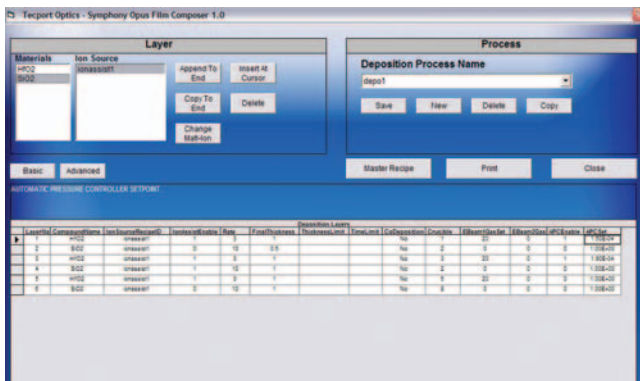
Ease of use and flexible configuration options satisfy the most demanding engineers.

Screen Navigation is simplified and intuitive—it is divided such that operator functions are cleanly separated from screens used for more advanced process control

Navigation bars as well as individual screen selectors are standard. With Symphony Opus there's no more getting lost in a popup quagmire to change a simple system parameter.

FLEXIBILITY - SYSTEM PARAMETERS

- All system components are configurable to provide simple integration of new hardware (i.e.: type and number of evaporation sources, type and number of vacuum pumps, etc...)
- System parameters such as pressure set points, valve activation alarm set points, maintenance schedule alarm time, and leak rate checks are all configurable to give more flexibility of system operation.
- Subcomponent parameters for functions such as cryogenic pump regeneration, mass flow controller, Polycold operation, and system startup and shutdown schedule are all configurable.



FLEXIBILITY - RECIPE MANAGEMENT

- Recipes are configured in blocks and then assembled into a final master recipe for speed and consistency.
- All recipes are stored using human readable names. Gone are the days of carrying a "cheat-sheet" to reference process numbers to recipe names.
- All parameters are adjustable in On-Line Edit Menu.

ONLINE EDIT

- All parameters are adjustable in On-Line Edit Menu.
- Any change in On-Line Edit will be effective real-time, but will not be changed in saved recipe.

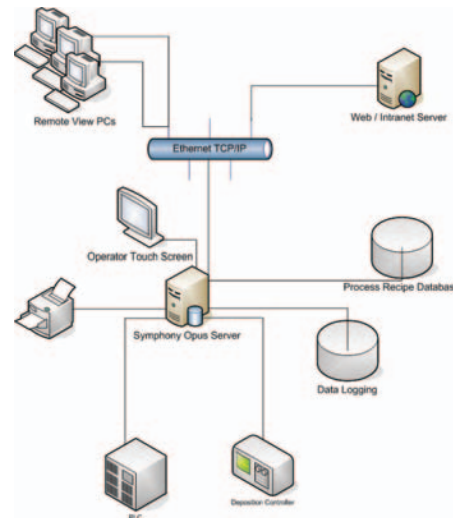


SECURITY

- User rights are assigned logically by functional groups that parallel operator skills and responsibilities.
- Each user has in individual login and password for process accountability.

DATA LOGGING

- Storage of process data in a database.
- Storage of alarm data in a database.
- Activity Log - Recording of all operator and system events in time sequence. System records all button clicks and parameter changes by Date, Time, Event, User Name, Run Number, and Recipe. This is extremely useful for user accountability and for analyzing the human aspect of running a process.
- Realtime trending and historical graphs.



NETWORK

- Symphony Opus is Network Ready using standard Ethernet TCP/IP.
- Managers can view the HMI screen remotely from any pc via Ethernet.
- Remote support from Tecport is possible via Ethernet or Dialup Modem.
- Process Data, Reports, and Recipe information are all viewable over a standard Ethernet connection.

ONLINE HELP

- All product manuals are accessible from the HMI.
- Additional manuals or customer's own procedure manuals can be made available simply by copying them into a specific directory on the control PC.